

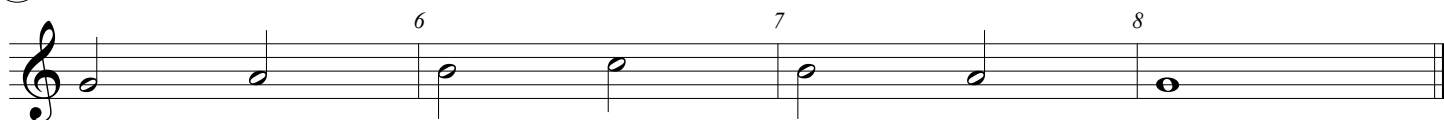
Trumpet
Tenor Sax

Concert Bb Scale Study

①



②



③



④



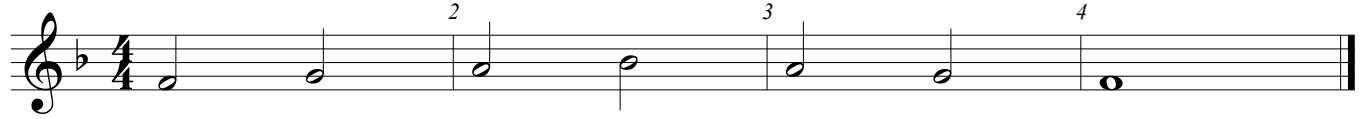
⑤



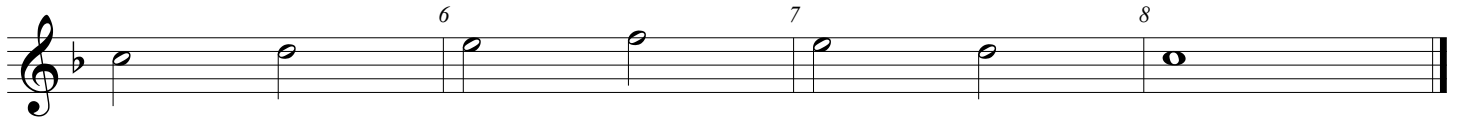
Trumpet

Concert Eb Scale Study

①



②



③



④



⑤



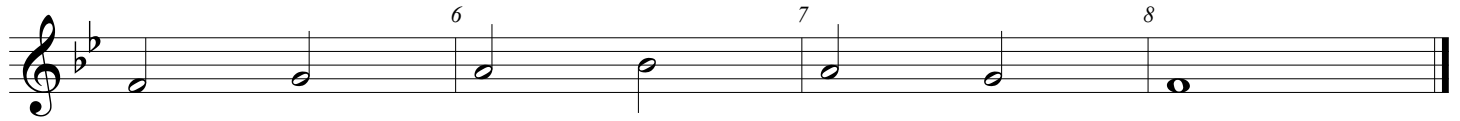
Trumpet
Bass Clarinet

Concert Ab Scale Study

①



②



③



④



⑤



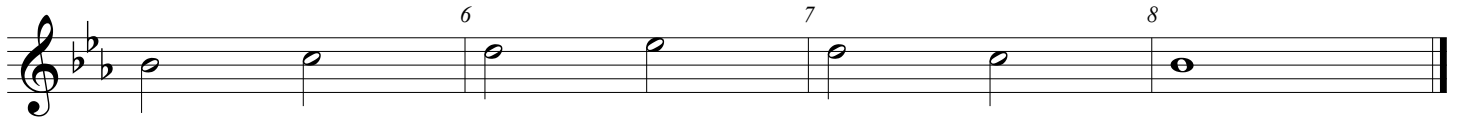
Trumpet

Concert Db Scale Study

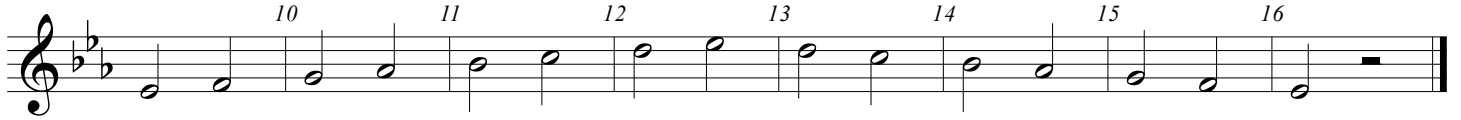
①



②



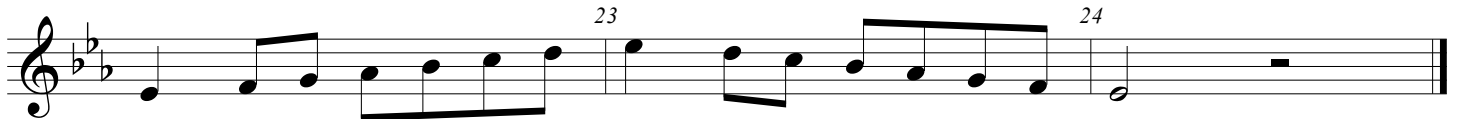
③



④



⑤



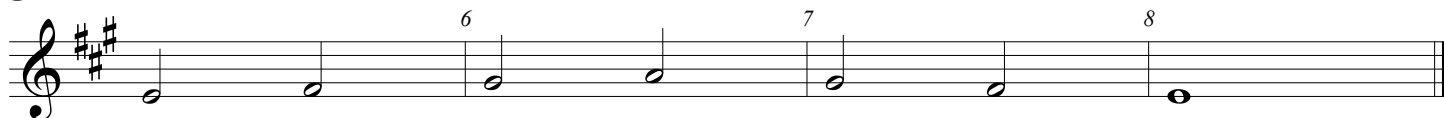
Trumpet
Bass Clarinet

Concert G Scale Study

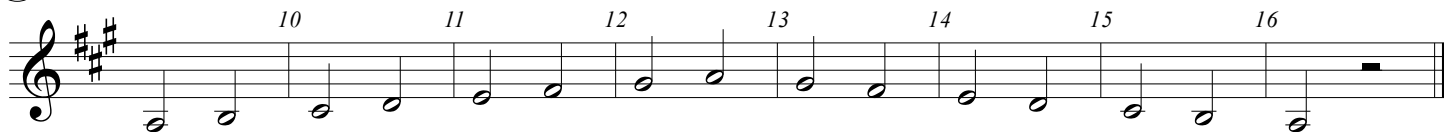
①



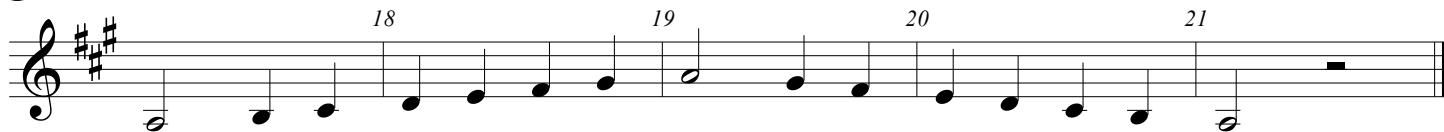
②



③



④



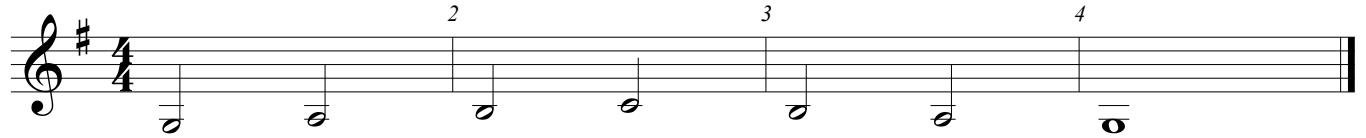
⑤



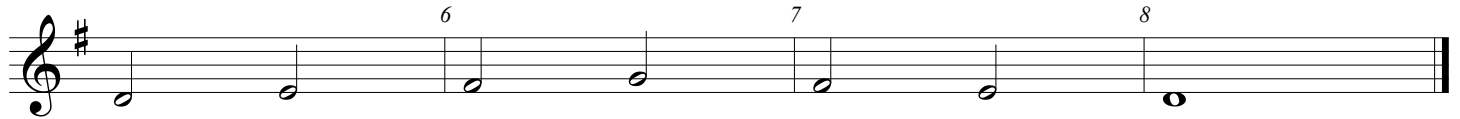
Clarinet
Bass Clarinet
Trumpet

Concert F Scale Study

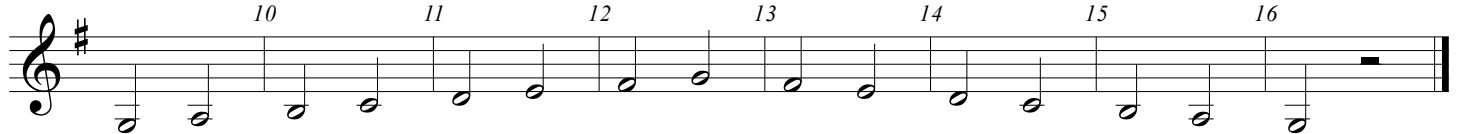
①



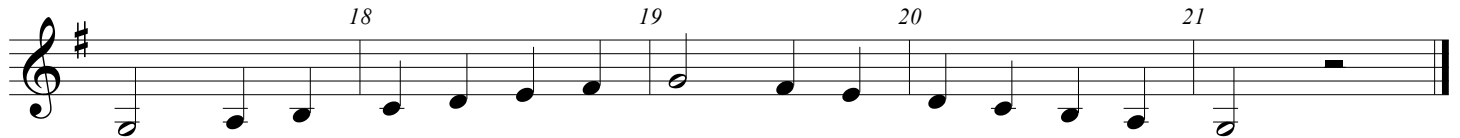
②



③



④



⑤



2

Concert F Scale Study

6

26 27 28

7

30 31 32

8

34 35 36 37 38 39 40

9

42 43 44 45 46 47 48

49

49 50 51 52 53 54 55 56

10

58 59 60 61 62 63 64 65

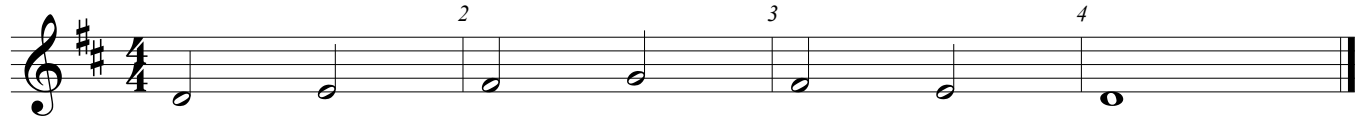
11

67 68 69 70

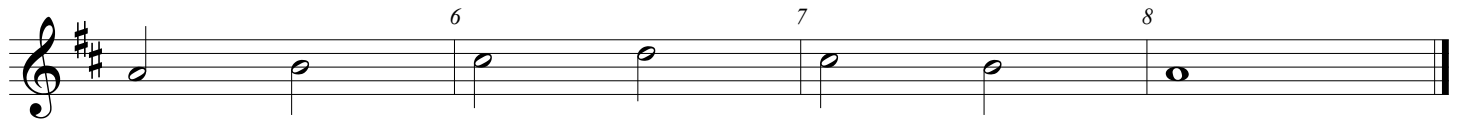
Trumpet
Bass Clarinet

Concert C Scale Study

1



2



3



4



5



Chromatic Scale Sheet For Trumpet

The Chromatic scale is a series of notes played in succession - ascending and descending without any skips in intervals. Imagine playing every note on the piano without skipping any.

1. Say the Notes

2. Finger the Notes

3. Play the Notes

Ascending (Going Up)



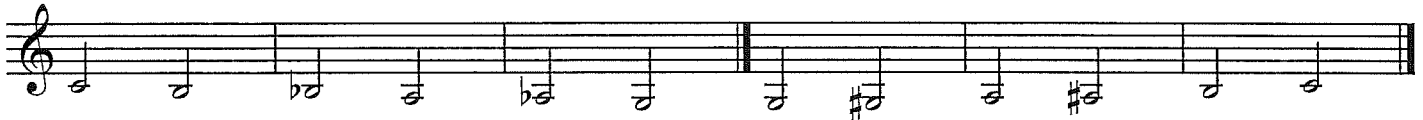
Descending (Going Down)



Exercise No. 1 (C to G)



Exercise No. 2 (C to low G)



- Every time you play:
1. Connect each note together with a long and fast air stream
 2. Practice breathing in the same spot every time
 3. Move your fingers and tongue together with the metronome (and tap your foot)
 4. Every note must sound the same - especially the bottom and top notes
 5. Practice each measure first, then put them together.

Exercise No. 3 (Chromatic Scale G to G)



Exercise No. 4 (F to C)



Exercise No. 5 (Chromatic Scale C to C)



Chromatic Scale Sheet For Trumpet

1. Say the notes

2. Finger the notes

3. Play the notes

Exercise No. 6 (Chromatic Scale G to C)

The first staff of Exercise No. 6 shows an ascending chromatic scale from G4 to C5. The notes are: G4, A4, B4, C5. The second staff shows a descending chromatic scale from C5 to G4. The notes are: C5, B4, A4, G4. The descending scale is marked with a slur and a fermata.

Exercise No. 7 (Chromatic Scale Low G to E)

The first staff of Exercise No. 7 shows an ascending chromatic scale from G3 to E4. The notes are: G3, A3, B3, C4, D4, E4. The second staff shows a descending chromatic scale from E4 to G3. The notes are: E4, D4, C4, B3, A3, G3. The descending scale is marked with a slur and a fermata.

Exercise No. 8 (Chromatic Scale Low G to High G)

The first staff of Exercise No. 8 shows an ascending chromatic scale from G3 to G5. The notes are: G3, A3, B3, C4, D4, E4, F4, G4, A4, B4, C5, D5, E5, F5, G5. The second staff shows a descending chromatic scale from G5 to G3. The notes are: G5, F5, E5, D5, C5, B4, A4, G4, F4, E4, D4, C4, B3, A3, G3. The descending scale is marked with a slur and a fermata.